

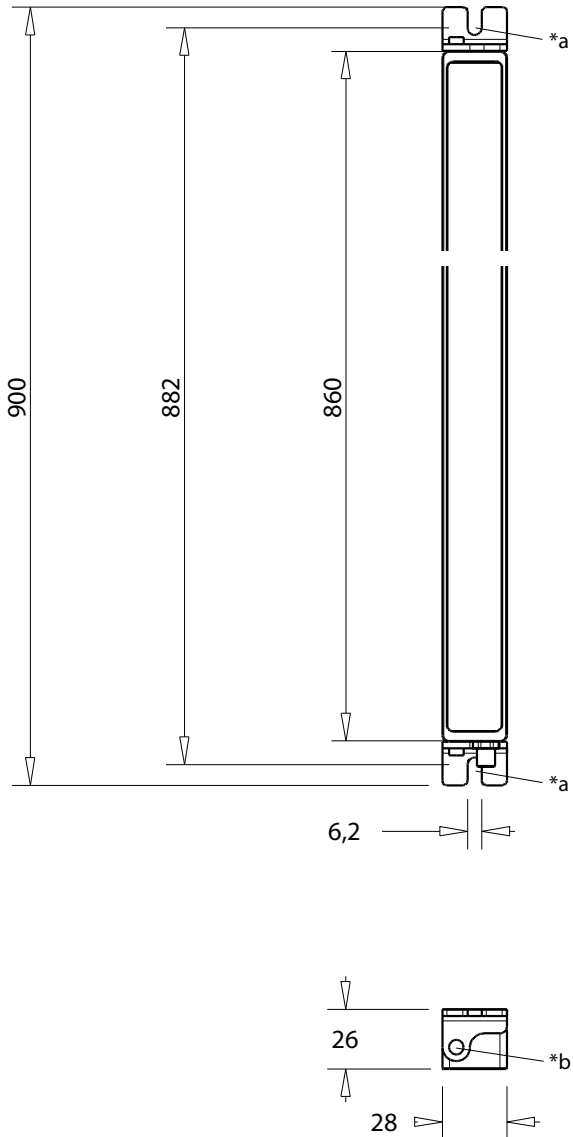
61 6157 8055 S09 24W

Machine Lights



Linear LED light, 24 W, 860 mm length, with solid aluminum housing and frosted tempered glass, IP67, with male M8 connector

61 6157 8055 S09 24W



Environmental conditions

Temperature range $\leq 50\text{ }^{\circ}\text{C}$

Materials

Housing aluminum, anodized
Lamp cover tempered glass, frosted

Mechanical data

Protection class IP67
Weight ca. 800 g

Electrical data (at $T_{\text{amb}} 20\text{ }^{\circ}\text{C}$)

Power consumption 24 W
Connected load 24 V DC (-10 %/+15 %)
Nominal current 1 A
Appliance class III

Lighting data

Illuminant LED, energy efficiency class A+
Luminaire luminous flux ca. 2520 lm
Luminaire luminous efficacy ca. 105 lm/W
Light color daylight white
Color temperature ca. 5500 K
Color rendering index > 80
Light distribution direct, wide radiation, $> 120^{\circ}$

Associated products

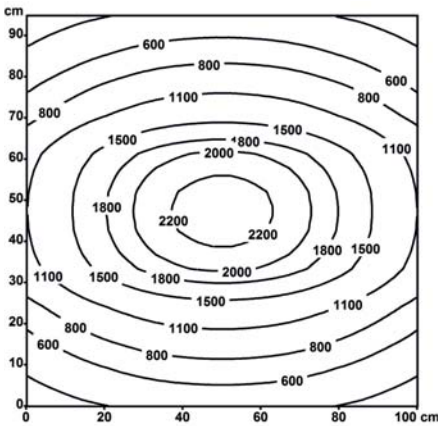
Counterparts
 ☞ 0800 ... 0... ☞ 0800 ... 3... ☞ 0800F1 ... 0...
 ☞ 0800F1 ... 3... ☞ 0805 ... 0... ☞ 0805 ... 3...
 ☞ 0805F1 ... 0... ☞ 0806 ... L1 0... ☞ 0806 ... L1 3...
 ☞ 0810 0800 ... 0... ☞ 0810 0800 ... 3... ☞ 0810 0805 ... 3...
 ☞ 0810 0806 ... L1 3... ☞ 1210 0800 ... 3... ☞ 1210 0806 ... L1 3...

Accessories
 ☞ 9908 CPM0

61 6157 8055 S09 24W

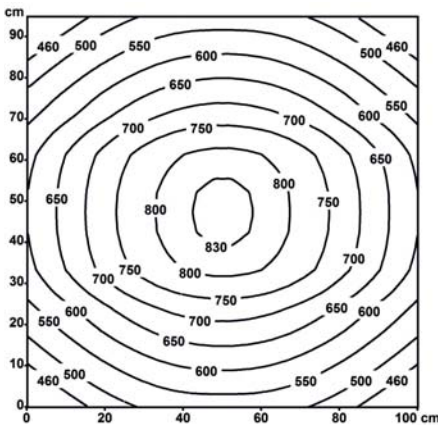
Illuminance with measuring distance 50 cm

Em: 1168 lx
Emax: 2300 lx
Emin: 348 lx



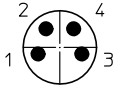
Illuminance with measuring distance 100 cm

Em: 645 lx
Emax: 841 lx
Emin: 417 lx



61 6157 8055 S09 24W

Pin assignment for male M8 connector, A-coded, front view



4 pole

- 1 DC (+)
- 2 not connected
- 3 DC (-)
- 4 not connected

*a for fixation by means of screws M5 or M6, max. bolt head diameter 12 mm

*b hinged fixation, screw with hexagon socket 2.5 mm

61

6157 8055 S09 24W

Designation	Pole Number	PU (Pieces)	MDQ (Pieces)
6157 8055 S09 24W	-	1	1

Packaging:
in a cardboard box