

M8 5012 04L1

Passive Actuator/Sensor Distribution Boxes M8

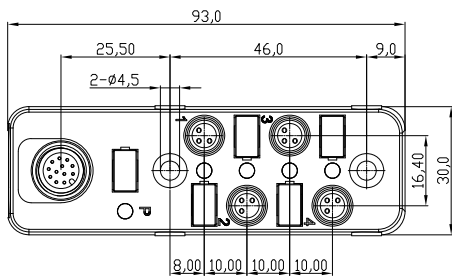
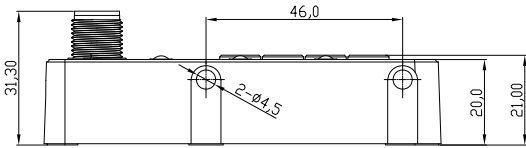


Passive distribution box M8, 4-port, single signal, with LEDs, IP67

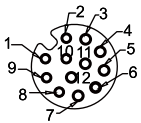
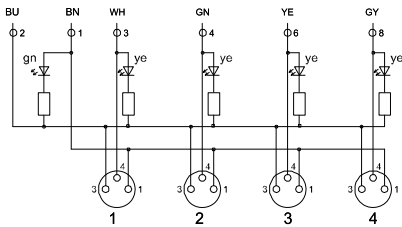
Main connection:

M12

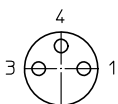
M8 5012 04L1



Wiring diagram



Pin assignment of female M8 connectors



- 3 pole
- 1 +
- 3 -
- 4 S1

Environmental conditions

Temperature range -40 °C/+80 °C

Materials

Insulating body	PA, V-2 according to UL94
Contact	CuZn, pre-nickel and gold-plated
Connector thread	CuZn, nickel-plated
Housing	PC/ABS
Resistance	Good resistance against chemicals and oils. Resistance against aggressive media to be individually verified for each application.

Mechanical data

Protection class IP67¹

¹ according to DIN EN 60529, only in locked position with proper counterparts or protective caps

Electrical data (at T_{amb} 20 °C)

Contact resistance	≤ 5 mΩ
Nominal current	≤ 1.5 A per port ≤ 1.5 A total
Nominal voltage	10–30 V DC (24 V DC)

Associated products

Counterparts		
☞ 0810 ... 0...	☞ 0810 ... 3...	☞ 0810 0800 ... 0...
☞ 0810 0800 ... 3...	☞ 0810 0805 ... 3...	☞ 0810 0806 ... L1 3...
☞ 0815 ... 0...	☞ 0815 ... 3...	☞ 1200 ... 3...
☞ 1205 ... 3...		
Accessories		
☞ 9908 CPF0	☞ 9912 CPM0	☞ 9950 LB PF20

M8

5012 04L1

Designation	Pole Number	PU (Pieces)	MDQ (Pieces)
5012 04L1	4 x 3	1	1

Packaging:

in a cardboard box