

M8

5000 04L1 3...

## Passive Actuator/Sensor Distribution Boxes M8

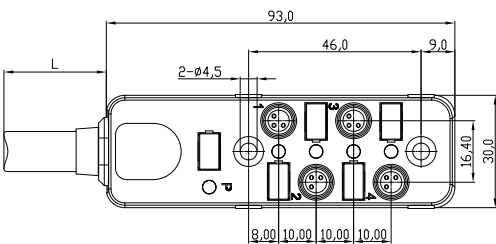
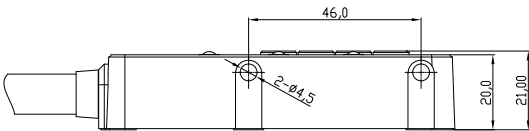


Passive distribution box M8, 4-port, single signal, with LEDs, IP67

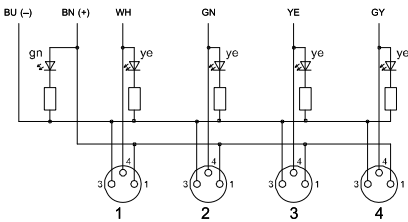
**Main connection:**

cable, PUR, grey

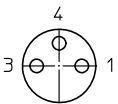
**M8** 5000 04L1 3...



**Wiring diagram**



**Pin assignment of female M8 connectors**



3 pole  
1 +  
3 -  
4 S1

**Environmental conditions**

Temperature range -40 °C/+80 °C

**Materials**

Insulating body PA, V-2 according to UL94  
Contact CuZn, pre-nickel and gold-plated  
Connector thread CuZn, nickel-plated  
Housing PC/ABS  
Resistance Good resistance against chemicals and oils. Resistance against aggressive media to be individually verified for each application.

**Mechanical data**

Protection class IP67<sup>1</sup>

<sup>1</sup> according to DIN EN 60529, only in locked position with proper counterparts or protective caps

**Electrical data (at T<sub>amb</sub> 20 °C)**

Contact resistance ≤ 5 mΩ  
Nominal current ≤ 2 A per port  
≤ 8 A total  
Nominal voltage 10–30 V DC (24 V DC)

**Associated products**

Counterparts

☞ 0810 ... 0... ☞ 0810 ... 3... ☞ 0810 0800 ... 0...  
☞ 0810 0800 ... 3... ☞ 0810 0805 ... 3... ☞ 0810 0806 ... L1 3...  
☞ 0815 ... 0... ☞ 0815 ... 3...

Accessories

☞ 9908 CPF0 ☞ 9950 LB PF20

M8

5000 04L1 3...

Designation	Pole Number	Connected Cable	PU (Pieces)	MDQ (Pieces)	Dimensions L (mm)
5000 04L1 307 5m	4 x 3	PUR, grey, 4 x 0.22 mm <sup>2</sup> (AWG 24)/2 x 0.5 mm <sup>2</sup> (AWG 21), 910307, UL-style 20549	1	1	5000
5000 04L1 307 10m	4 x 3	PUR, grey, 4 x 0.22 mm <sup>2</sup> (AWG 24)/2 x 0.5 mm <sup>2</sup> (AWG 21), 910307, UL-style 20549	1	1	10000

**Packaging:**  
in a plastic bag